

YEAR 2019

CORE STATION 5019

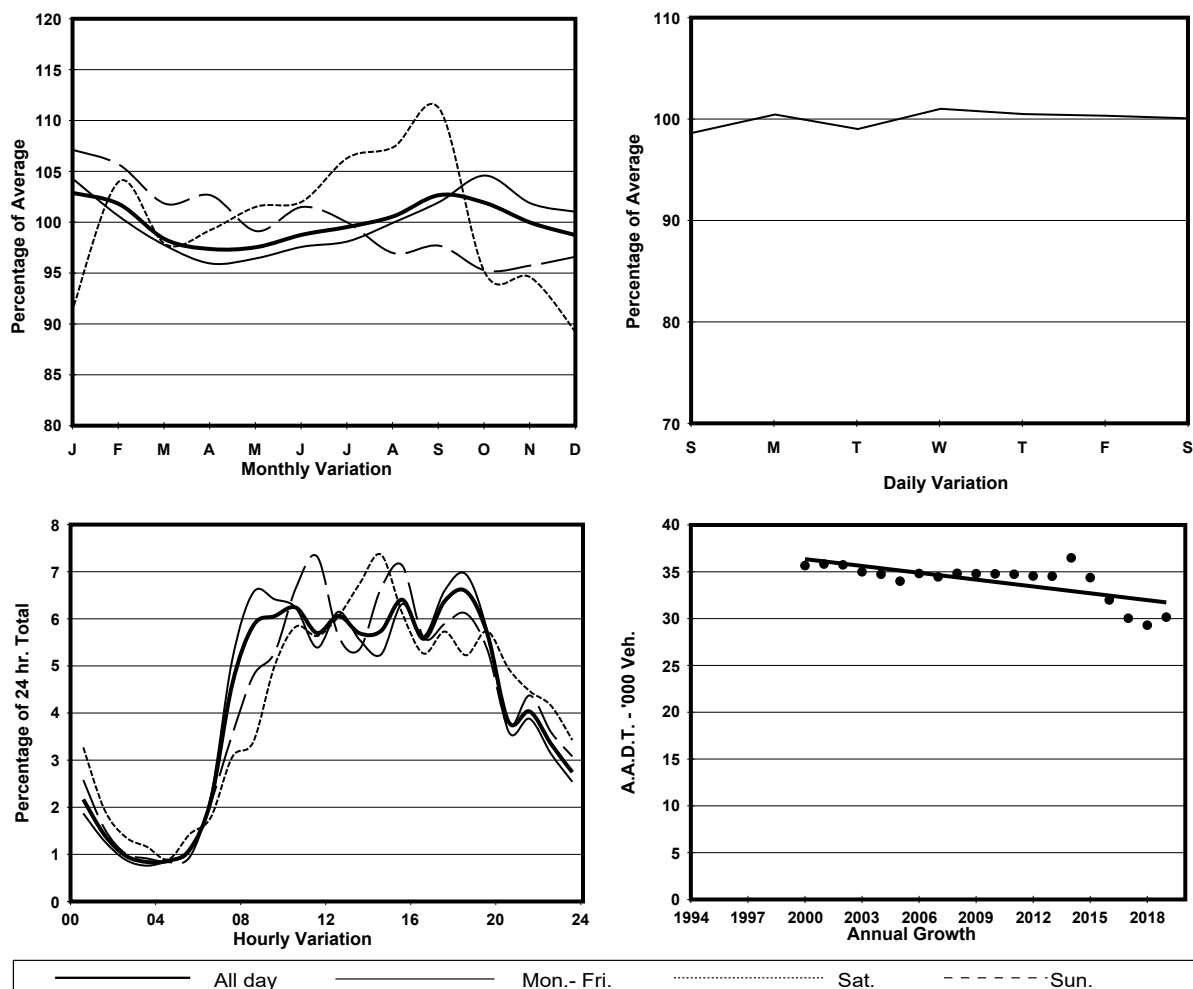
ROAD NETWORK MAJOR

ROAD TYPE RURAL TRUNK ROAD

LINK CASTLE PEAK RD - YUEN LONG (from YUEN LONG ON LOK RD to KAM TIN RD)

2.0m 2.0m 1.5m 10.4m 1.5m 10.4m 1.5m 2.0m 2.0m
Cycle Track vV bound 3 lanes E bound 3 lanes Cycle Track

1. TRAFFIC FLOW VARIATION AND GROWTH



2. TRAFFIC CHARACTERISTICS (BY DIRECTION)

Parameter	All - Day	Mon. - Fri.	Sat.	Sun.
EAST BOUND				
A.A.D.T.	12370	12110	12740	13400
R 12 / 24 - %	70.7	71.7	69	67.7
R 16 / 24 - %	87.8	88.6	86.3	85.7
AM Peak Hour	0800-0900	0800-0900	0900-1000	0900-1000
One-way flow at AM peak hour	820	910	760	740
T - % (AM)	-	-	-	-
PM Peak Hour	1700-1800	1700-1800	1600-1700	1700-1800
One-way flow at PM peak hour	770	750	760	880
T - % (PM)	-	-	-	-
Prop.of commercial vehicles - 16 hr.	-	-	-	-
WEST BOUND				
A.A.D.T.	17790	18160	17440	16340
R 12 / 24 - %	71	72.4	70.7	63.6
R 16 / 24 - %	87.7	88.5	87.5	83.9
AM Peak Hour	0900-1000	0900-1000	0900-1000	0900-1000
One-way flow at AM peak hour	1040	1150	830	750
T - % (AM)	-	-	-	-
PM Peak Hour	1800-1900	1800-1900	1800-1900	1700-1800
One-way flow at PM peak hour	1270	1400	1100	820
T - % (PM)	-	-	-	-
Prop.of commercial vehicles - 16 hr.	-	-	-	-

3. OTHER INFORMATION AND COMMENT